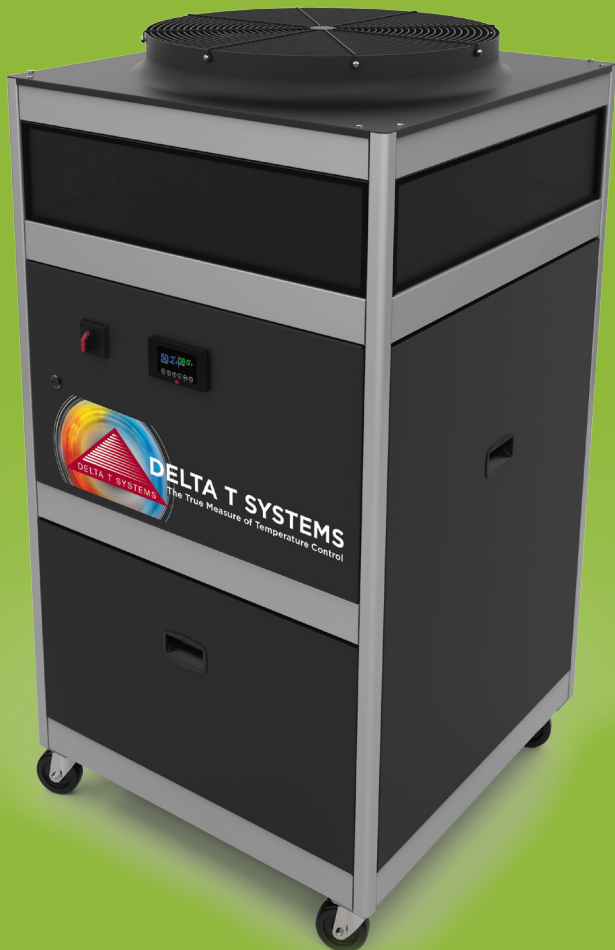


VARIABLE SPEED (VS) CHILLERS

**THE MOST EFFICIENT INDUSTRIAL
PROCESS CHILLER ON THE MARKET.**

Save energy and control precise temperature
Brand New in 2017, the Delta T Systems 'VS Chiller' features a variable speed compressor that operates efficiently between 10% and 100% of its rated capacity. Using 'green' variable speed technology proven in the HVAC industry, the compressor produces up to a stunning 50% energy savings over traditional hot gas bypass regulation. These cost savings can pay for the chiller in less than 3 years. This chiller also has state-of-the-art controls and sensors allowing it to hold exact temperatures ($\pm 0.5^{\circ}\text{F}$) in your process.



PRODUCT HIGHLIGHTS

- Energy savings up to 50% compared to traditional chillers
- Effective operation between 10% and 100% load
- Tight temperature control to within $\pm 0.5^{\circ}\text{F}$
- 1-15 ton cooling capacity, air-cooled
- Adaptive controls with remote communication option
- Industry 4.0 ready
- Hermetically sealed variable speed compressor
- Electronic expansion valve
- Variable speed condenser fan
- Standard operating range from 0°F to 80°F (-18°C to 27°C)
- Pump capacity 2 to 72 GPM
- Non-ferrous chilled water piping

AVAILABLE IN STAINLESS STEEL

THE TRUE MEASURE OF TEMPERATURE CONTROL

ALL DELTA T SYSTEMS' PORTABLE VARIABLE SPEED CHILLERS HAVE THESE STANDARD MECHANICAL FEATURES

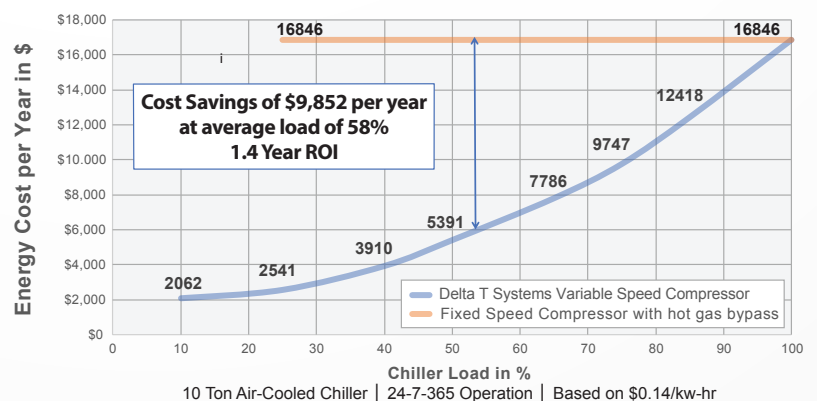
- Stainless steel, copper brazed plate evaporator
- Microchannel aluminum condenser coils
- Evaporator inlet strainer
- Refrigerant suction and discharge pressure transducers
- Refrigerant suction and condenser inlet temperature sensors to maximize electronic expansion valve and condenser fan efficiency
- Compressor discharge temperature sensor for compressor protection
- Chilled water in and out pressure and temperature sensors
- Tool free full access on all sides
- Separate air section so chiller can be serviced by removing panel without creating faults
- Round coil allows for locating chiller against a wall or in a corner
- Automatic water bypass
- Flow indication
- Dirty strainer indication
- Tank level indication
- TEFC Pump

STANDARD ELECTRICAL AND CONTROL FEATURES

- NEMA 12 electrical panel
- Disconnect switch
- 24V Controls
- Finger safe electrical components
- Phase monitor
- Proprietary, state of the art control platform
- Flexible remote communication options
- Extensive digital data collection
- Adaptive control reduces downtime
- Data logging
- Remote monitoring (optional)

ANNUAL COST SAVING COMPARISON

Delta T "VS Chiller" vs Fixed Speed Compressor



**Want to know your cost savings?
Contact us today!**

Our Temperature Control Units Perform to Spec for Applications in Numerous Industries

Water Circulating Units • Oil Circulating Units • Portable Chillers
Pump Reservoirs • Heat Exterminators • Other Specially-Designed Equipment and Systems



Delta T Systems, Inc.
2171 State Highway 175 • Richfield, Wisconsin 53076
Phone: 262.628.0331 • 800.733.4204 • Fax: 262.628.0332

WWW.DELTATSYS.COM
DELATPARTS.COM

If there is an option or accessory that you are interested in but do not see it listed, please consult a factory representative.